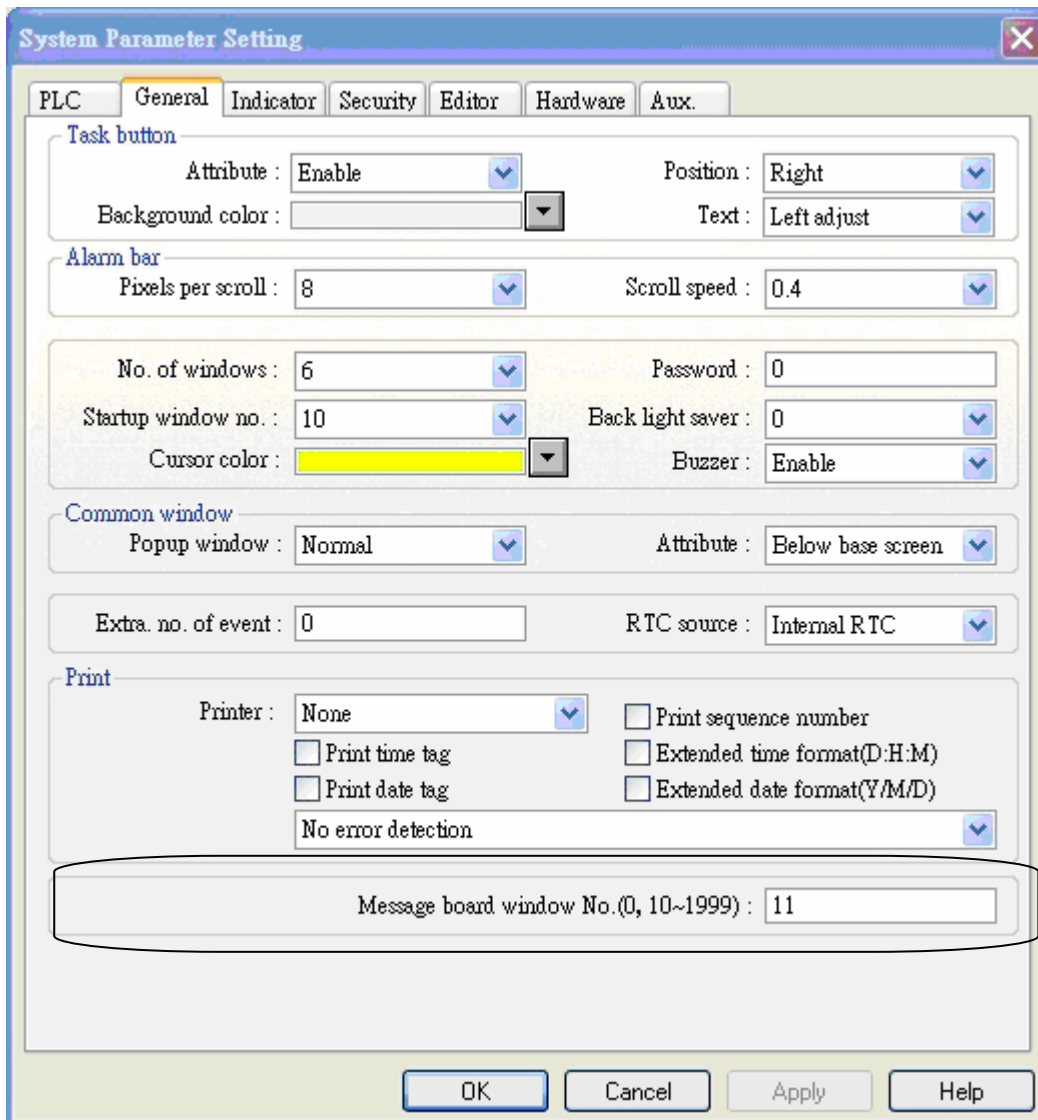
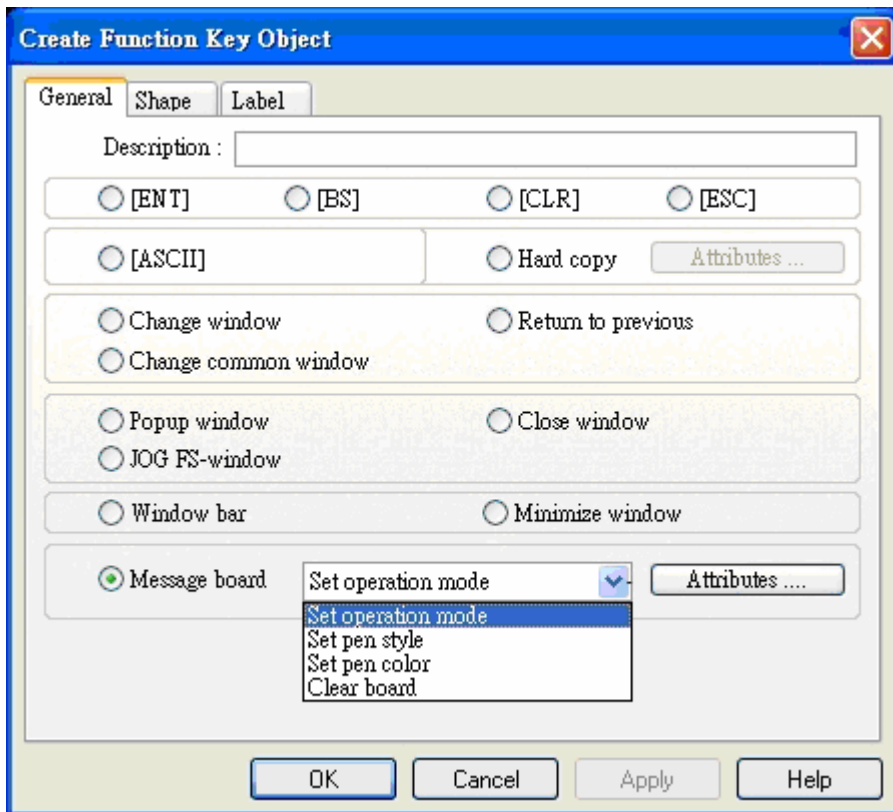


## Chapter 9. Message Board

Designate a window as a message board where an operator can input information in it. Designate this window from [System parameters]/[General] as follows. Here we assign window 11 as the message board.

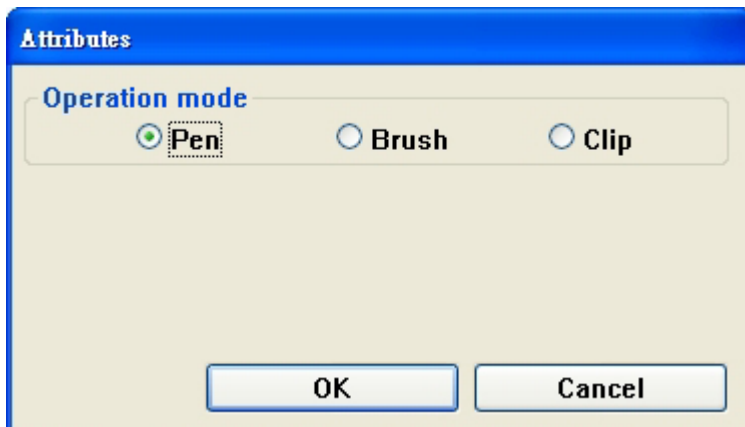


Operation mode, the thickness of the pen, color and clear board can be set from Function Key [Message Board]:



Functions of the Message Board explain as follows:

Set Operation Mode:

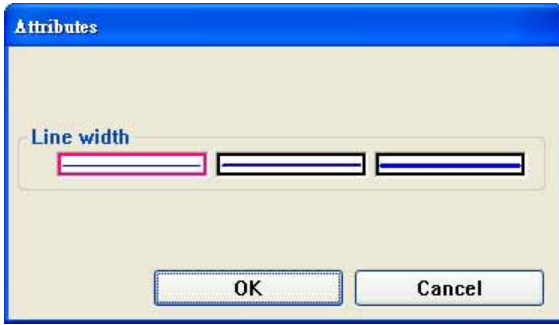


Pen: Used for drawing graphics or text on the Message Board window.

Brush: Used as an eraser to erase lines drawn by the pen.

Clip: Allows the operator to drag a rectangle around an area. When the operator stops touching the screen the area in the rectangle is erased.

Set pen style: Set pen style is used to select the pen thickness.



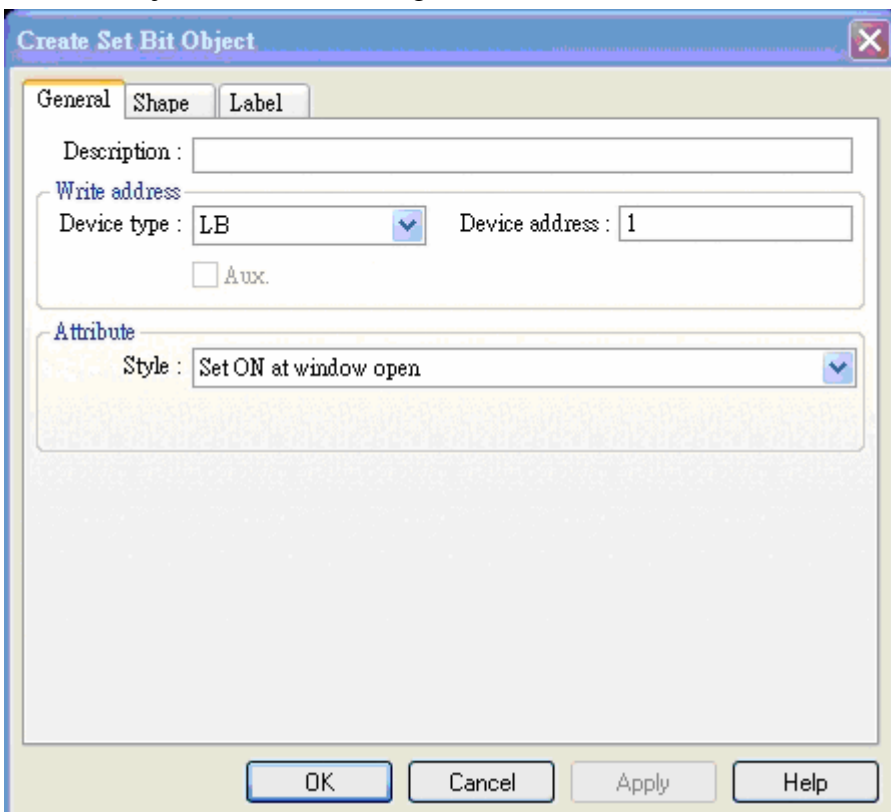
Set pen color: Set pen color is used to select the color of lines drawn on the Message window.



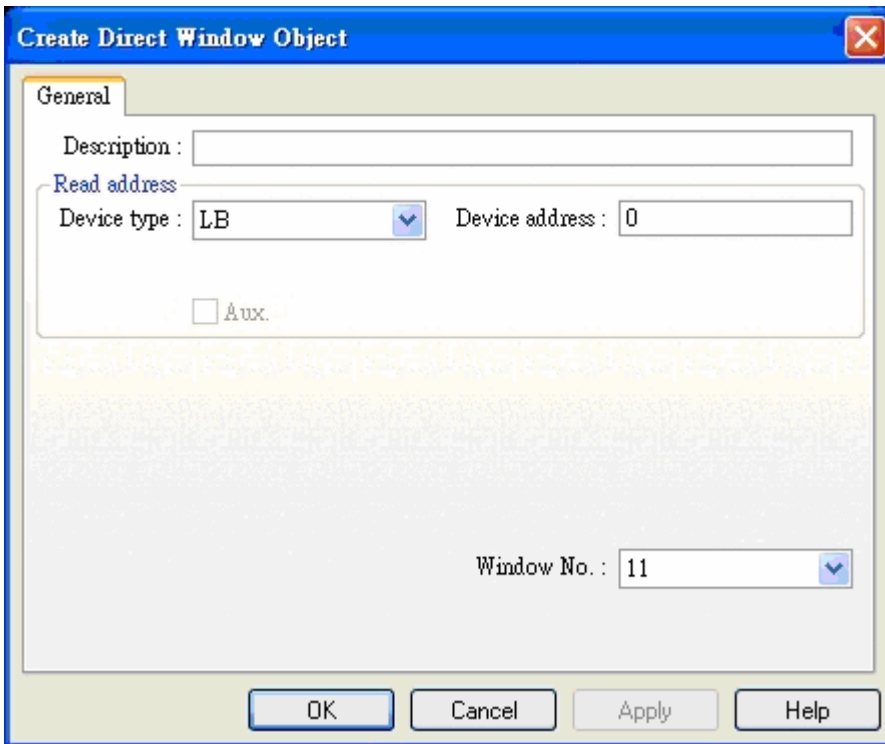
Clear board: Erases the entire Message window.

Example:

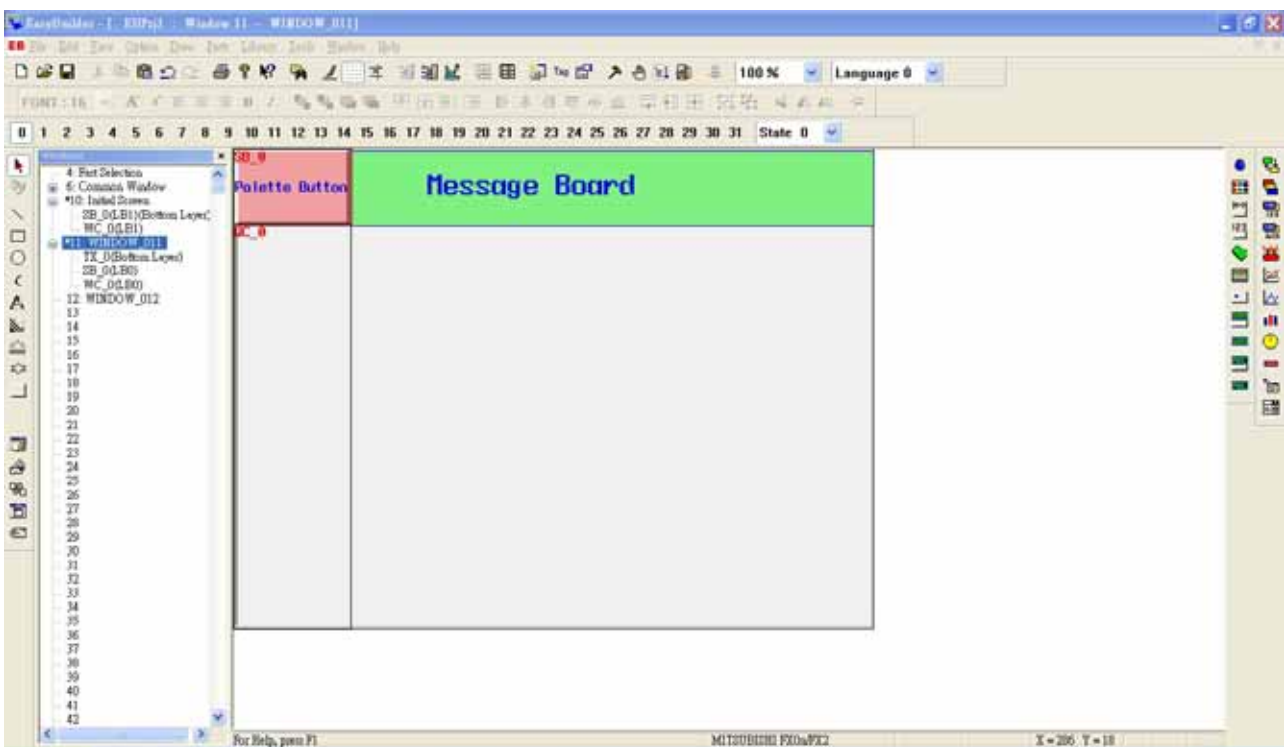
Select [File]/[New] to create a new project from EB500. Create window 11 and window 12. Place a “Set Bit Object” and a direct window. Direct window is set as a full screen and the setting of the “Set Bit Object” are as following:



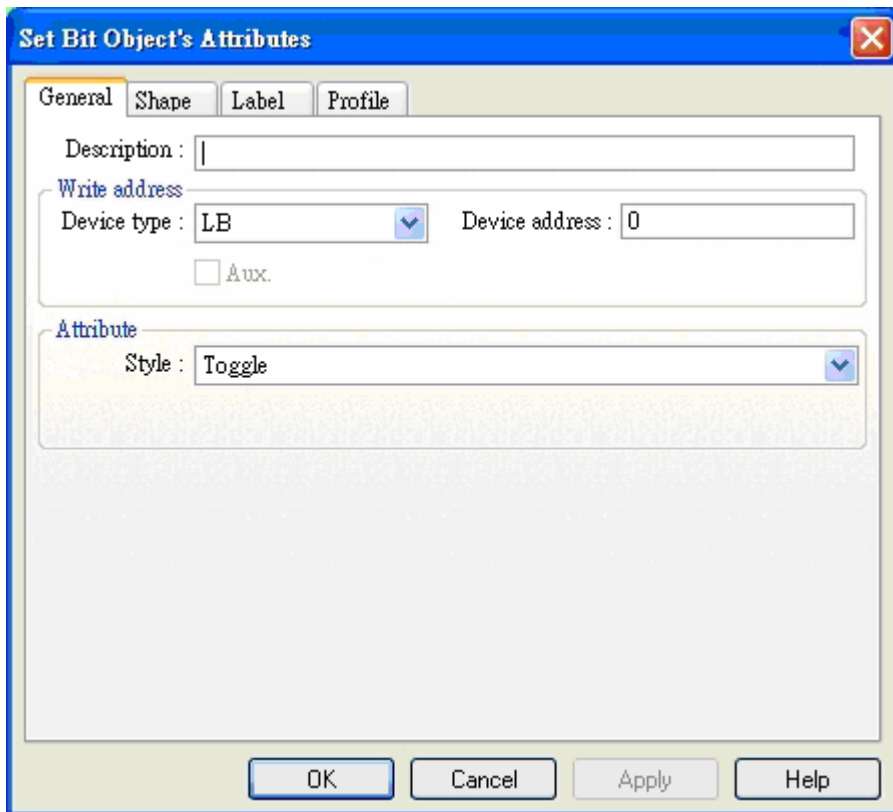
The setting of the direct window is as below:



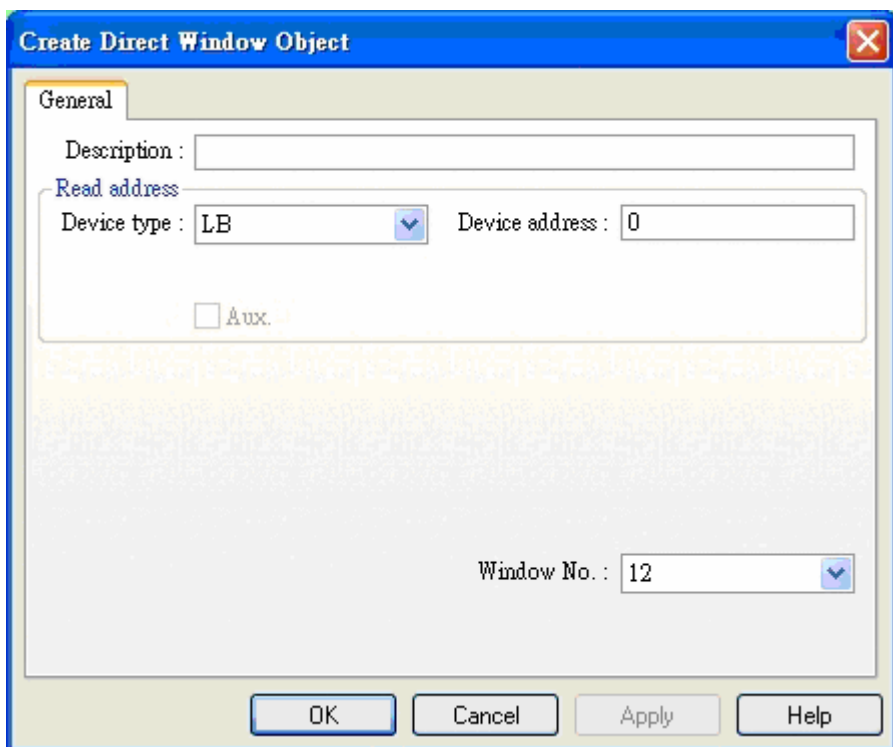
The setting of Window 11:



Palette button is a Set Bit Object, it establishes it as follows:

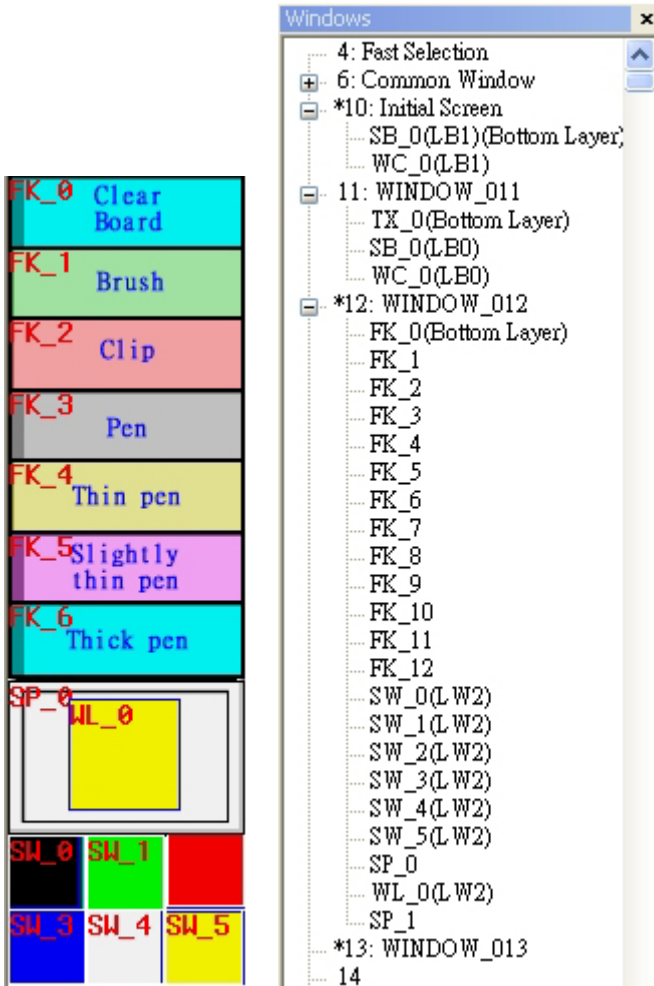


Another direct window:

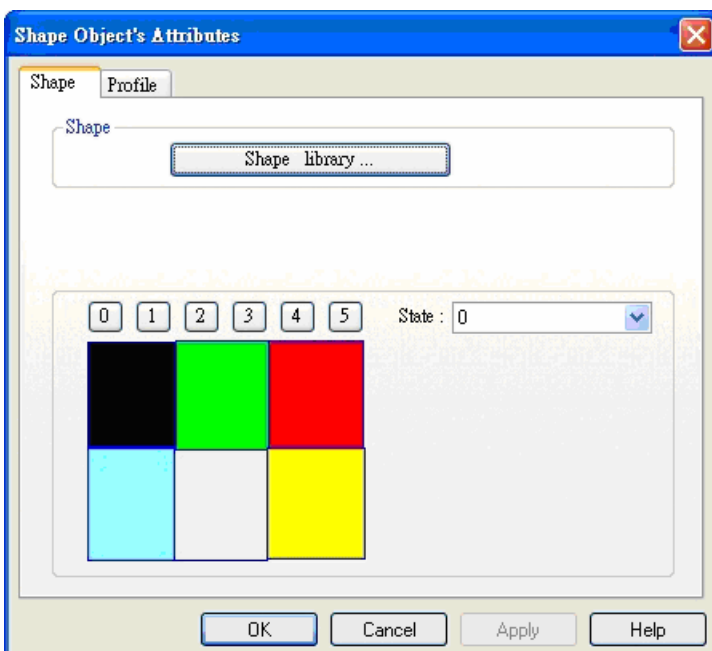


A other one some object that static behavior show, you can establish at will.

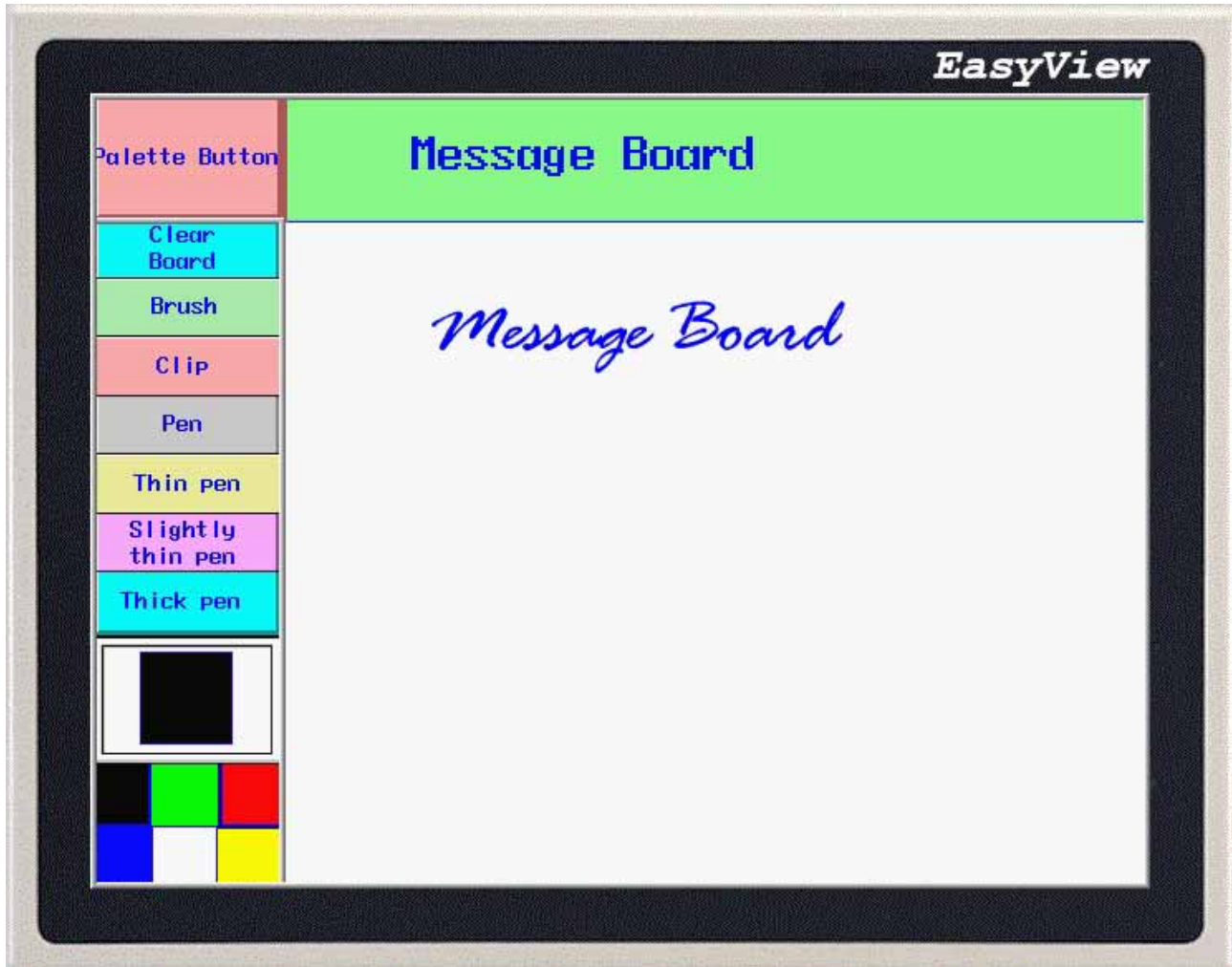
The setting of window 12: ( the size of window 12 should be the same as the window 11):



FK\_0 function key is Clear board function; FK\_1 is the Brush function; FK\_2 is the Clip function; FK\_3 is the Pen function; FK\_4, FK\_5 and FK\_6 represent 3 kinds of thickness of the pen; FK\_7, FK\_8, FK\_9, FK\_10, FK\_11, FK\_12 represent 6 different color; WL\_0 is Multi-state switch with 6 states and correspond to FK\_7...FK\_12 six colors; SP\_1 is white shape; SP\_0 is self-designed shape; the setting as below:



[Save]/[Compile]/[Off-line Simulation],[On-line Simulation] or [Download]. The result displays as below:



The system keeps LB9020-LB9022 and is used for controlling and combining identification Pen,Brush,Chip,choose or not,LB9030-LB9032 can set the thickness of the pen,LW9006 can set the operation mode,LW9007 can set the thickness of the pen,LW9008 can choose any pen's color from 256 colors. Please refer to Ch12 for detail.